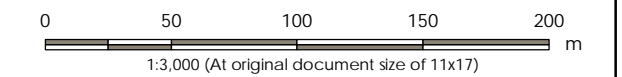


B.4 PREFERRED ALTERNATIVES

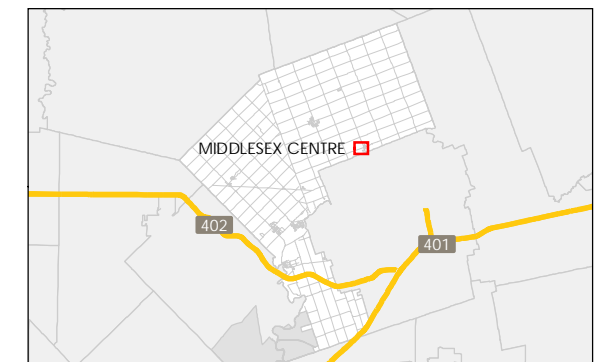
Middlesex Settlement Area Stormwater Master Plan,
July 2020

Legend

- Elevation Contour
- Development Area
- Storm Catchment Area
- Settlement Boundary
- Existing Infrastructure:**
 - Outlet
 - Storm Sewer
 - Municipal Drain
- Proposed Infrastructure:**
 - Overland Flow Direction
 - Storm Sewer



- Notes
1. Coordinate System: NAD 1983 UTM Zone 17N
 2. Parcels © Teranet Enterprises Inc. and its suppliers. All rights reserved. Not a plan of survey.
 3. 2015 orthoimagery © 2018 of the Queen's Printer for Ontario. All rights reserved.

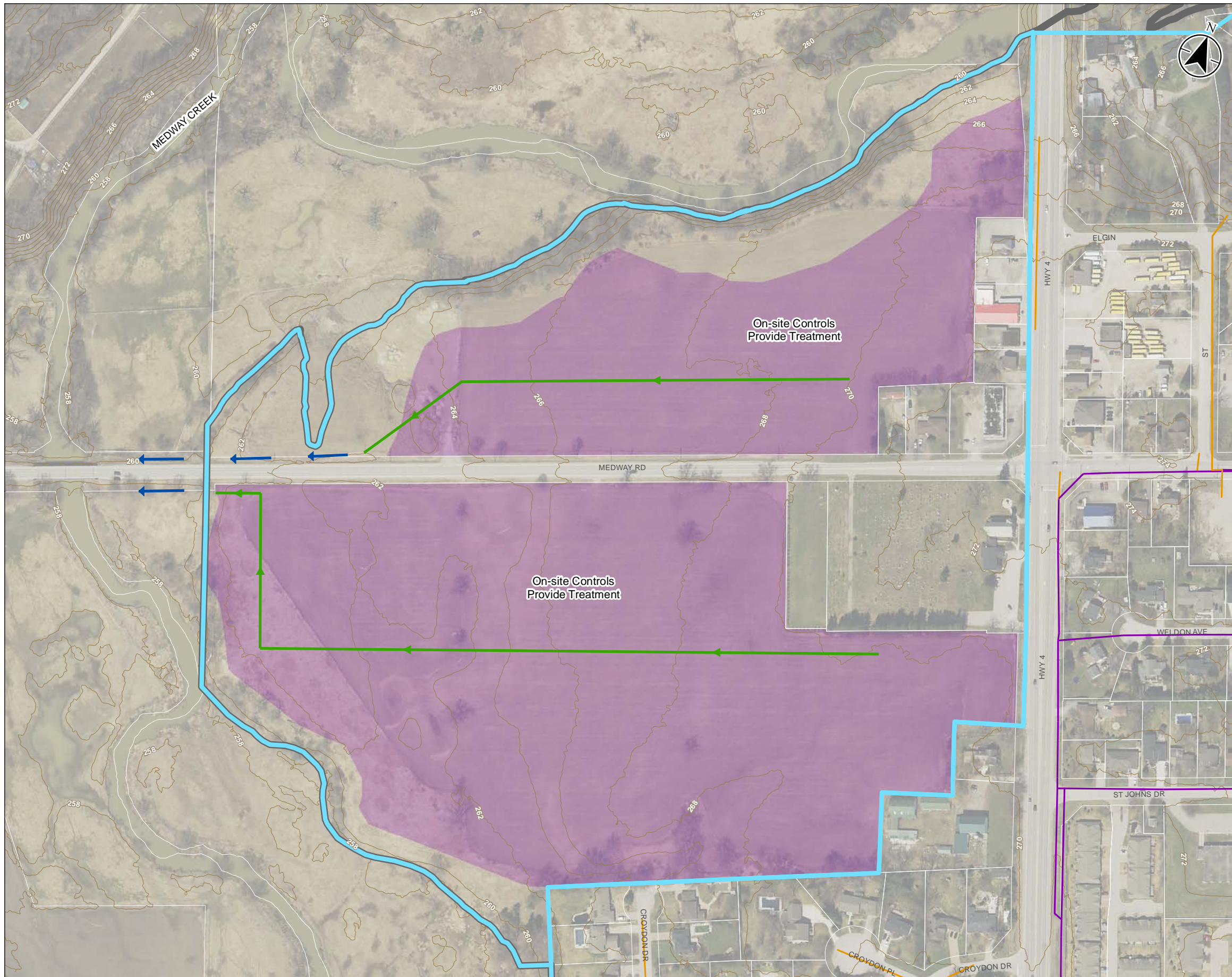


Project Location: Municipality of Middlesex Centre
 165630134 REVA
 Prepared by KDB on 2020-03-10

Client/Project: MUNICIPALITY OF MIDDLESEX CENTRE
 STORM DRAINAGE MASTER PLAN MUNICIPAL CLASS ENVIRONMENTAL ASSESSMENT

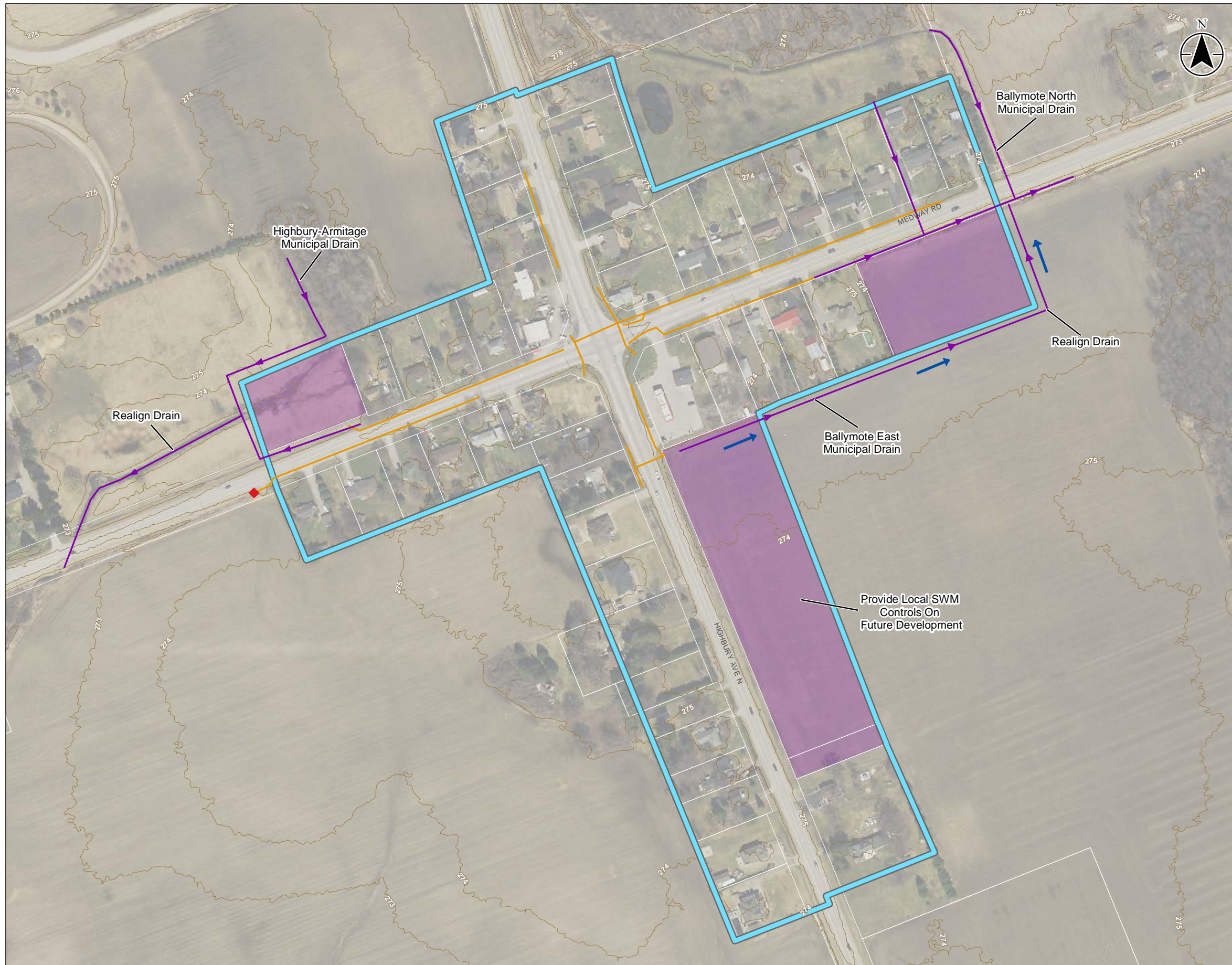
Figure No. B4-1

Title: Arva Development Area Preferred Alternative Local SWM Controls



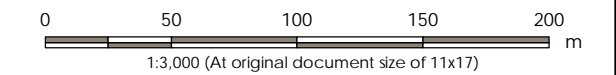
\\CA\217\FPP\501\work_group\0165630134\preliminary\analysis\gsa.mxd | Preferred\165630134_DPT_B4-1_Arva.mxd | Revised: 2020-03-10 By: albrown

\\CA\0217\FPP\SS01\work_group\0165630134\preliminary\analysis\ga.mxd\Preferred\165630134_DPT_B4-2_Ballymote.mxd Revised: 2020-07-10 By: abrown

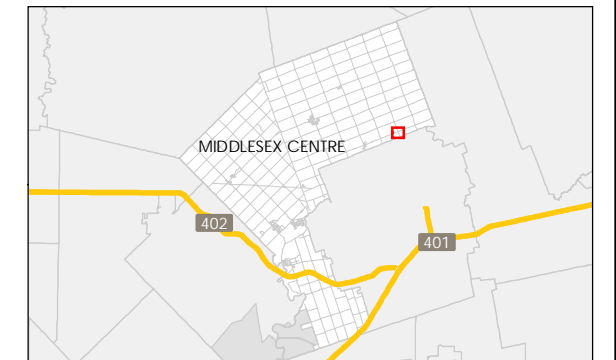


Legend

- Elevation Contour
- Development Area
- Storm Catchment Area
- Settlement Boundary
- Existing Infrastructure:**
- Outlet
- Storm Sewer
- Municipal Drain
- Proposed Infrastructure:**
- Overland Flow Direction
- Storm Sewer



- Notes**
1. Coordinate System: NAD 1983 UTM Zone 17N
 2. Parcels © Teranet Enterprises Inc. and its suppliers. All rights reserved. Not a plan of survey.
 3. 2015 orthoimagery © 2018 of the Queen's Printer for Ontario. All rights reserved.



Project Location: Municipality of Middlesex Centre
 165630134 REVA
 Prepared by KDB on 2020-07-10

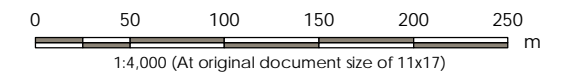
Client/Project:
 MUNICIPALITY OF MIDDLESEX CENTRE
 STORM DRAINAGE MASTER PLAN MUNICIPAL CLASS
 ENVIRONMENTAL ASSESSMENT

Figure No.
 B4-2

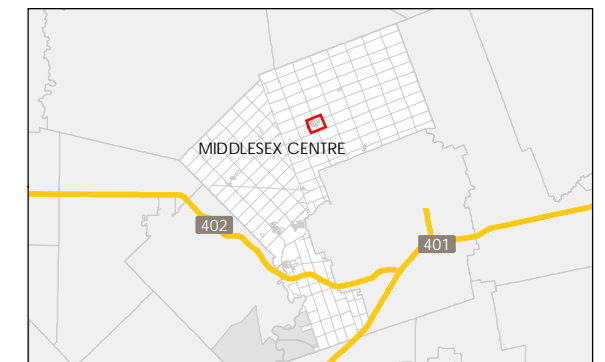
Title
 Ballymote Preferred Alternative
 On-Site SWM Controls

Legend

- Elevation Contour
- Development Area
- Storm Catchment Area
- Settlement Boundary
- Existing Infrastructure:**
 - Outlet
 - Storm Sewer
 - Municipal Drain
- Proposed Infrastructure:**
 - Overland Flow Direction
 - Storm Sewer



- Notes
1. Coordinate System: NAD 1983 UTM Zone 17N
 2. Parcels © Teranet Enterprises Inc. and its suppliers. All rights reserved. Not a plan of survey.
 3. 2015 orthoimagery © 2018 of the Queen's Printer for Ontario. All rights reserved.

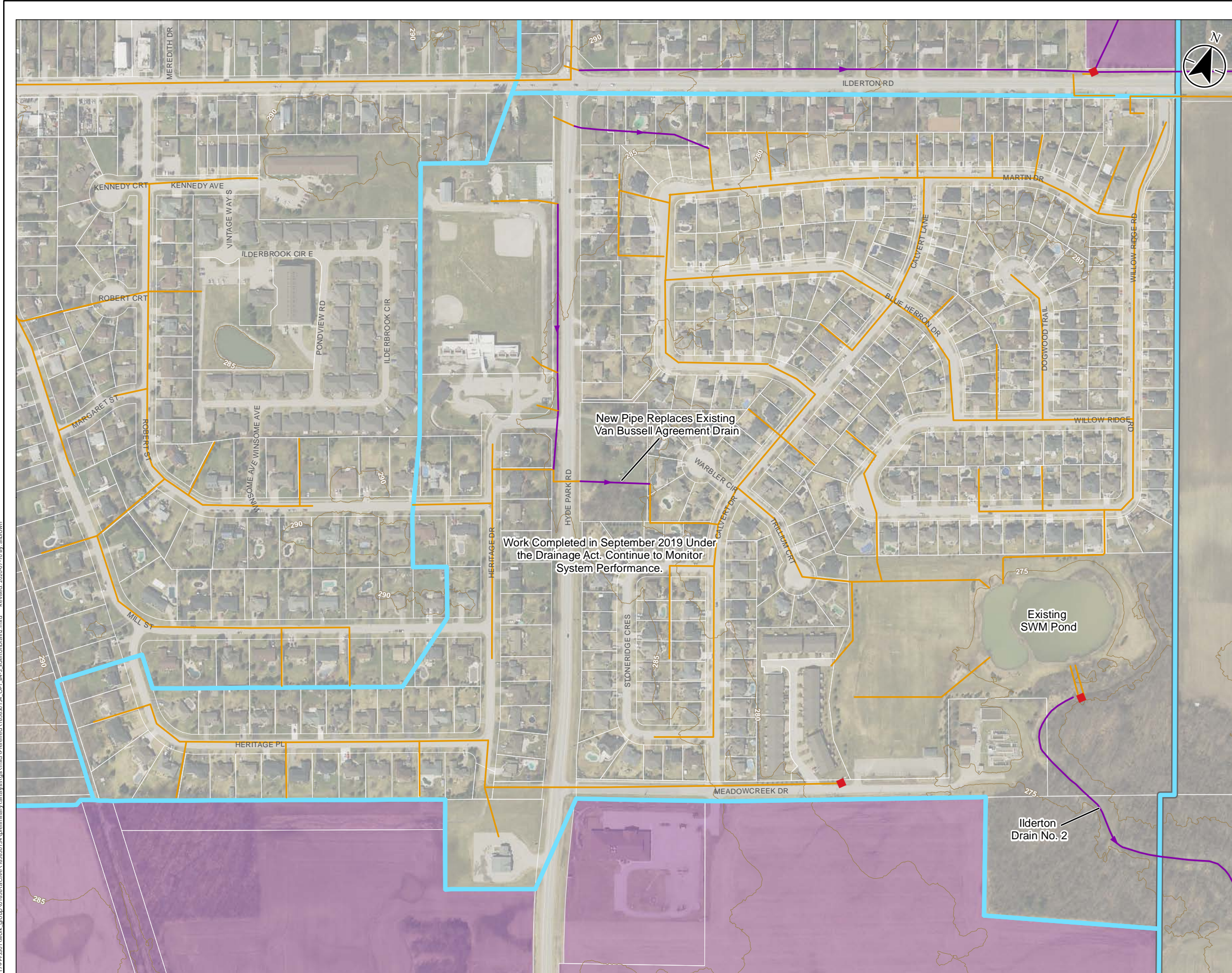


Project Location: Municipality of Middlesex Centre
 165630134 REVA
 Prepared by ASB on 2020-07-10

Client/Project: MUNICIPALITY OF MIDDLESEX CENTRE
 STORM DRAINAGE MASTER PLAN MUNICIPAL CLASS ENVIRONMENTAL ASSESSMENT

Figure No.: B4-3

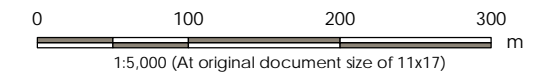
Title: Ilderton Drain No. 2 Preferred Alternative Drain Improvements



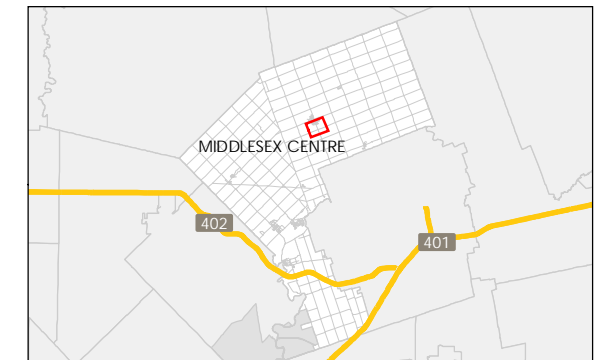
\\CA\217\FPP\501\work_group\0165630134\preliminary\analysis\ga.mxd\Preferred\165630134_OPT_B4-3_IldertonDrain2.mxd Revised: 2020-07-10 By: albrown

Legend

- Elevation Contour
- Development Area
- Storm Catchment Area
- Settlement Boundary
- Existing Infrastructure:**
- Outlet
- Storm Sewer
- Municipal Drain
- Proposed Infrastructure:**
- Overland Flow Direction
- Storm Sewer
- SWM Facility



- Notes
1. Coordinate System: NAD 1983 UTM Zone 17N
 2. Parcels © Teranet Enterprises Inc. and its suppliers. All rights reserved. Not a plan of survey.
 3. 2015 orthoimagery © 2018 of the Queen's Printer for Ontario. All rights reserved.

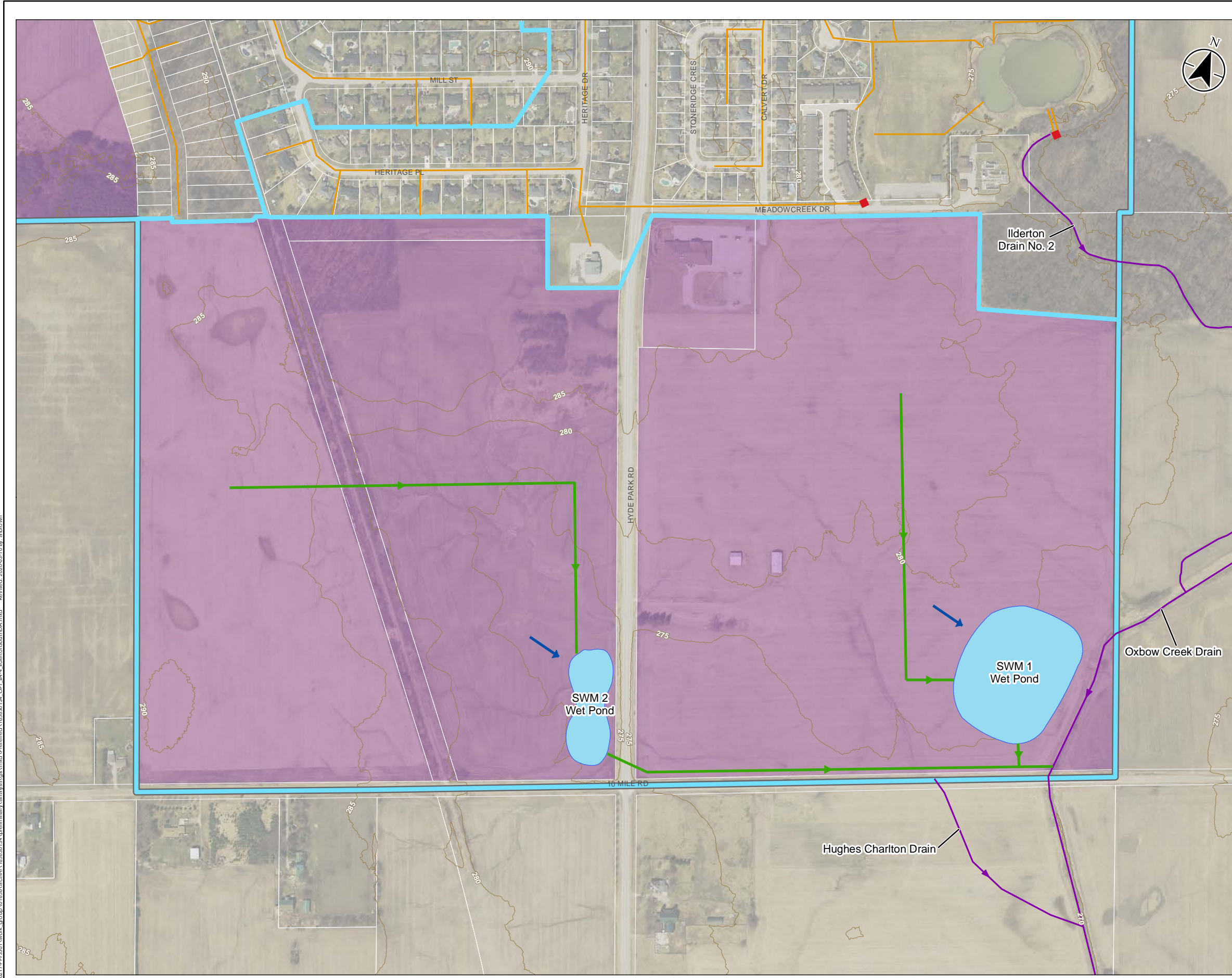


Project Location: Municipality of Middlesex Centre
 165630134 REVA
 Prepared by ASB on 2020-03-10

Client/Project:
 MUNICIPALITY OF MIDDLESEX CENTRE
 STORM DRAINAGE MASTER PLAN MUNICIPAL CLASS
 ENVIRONMENTAL ASSESSMENT

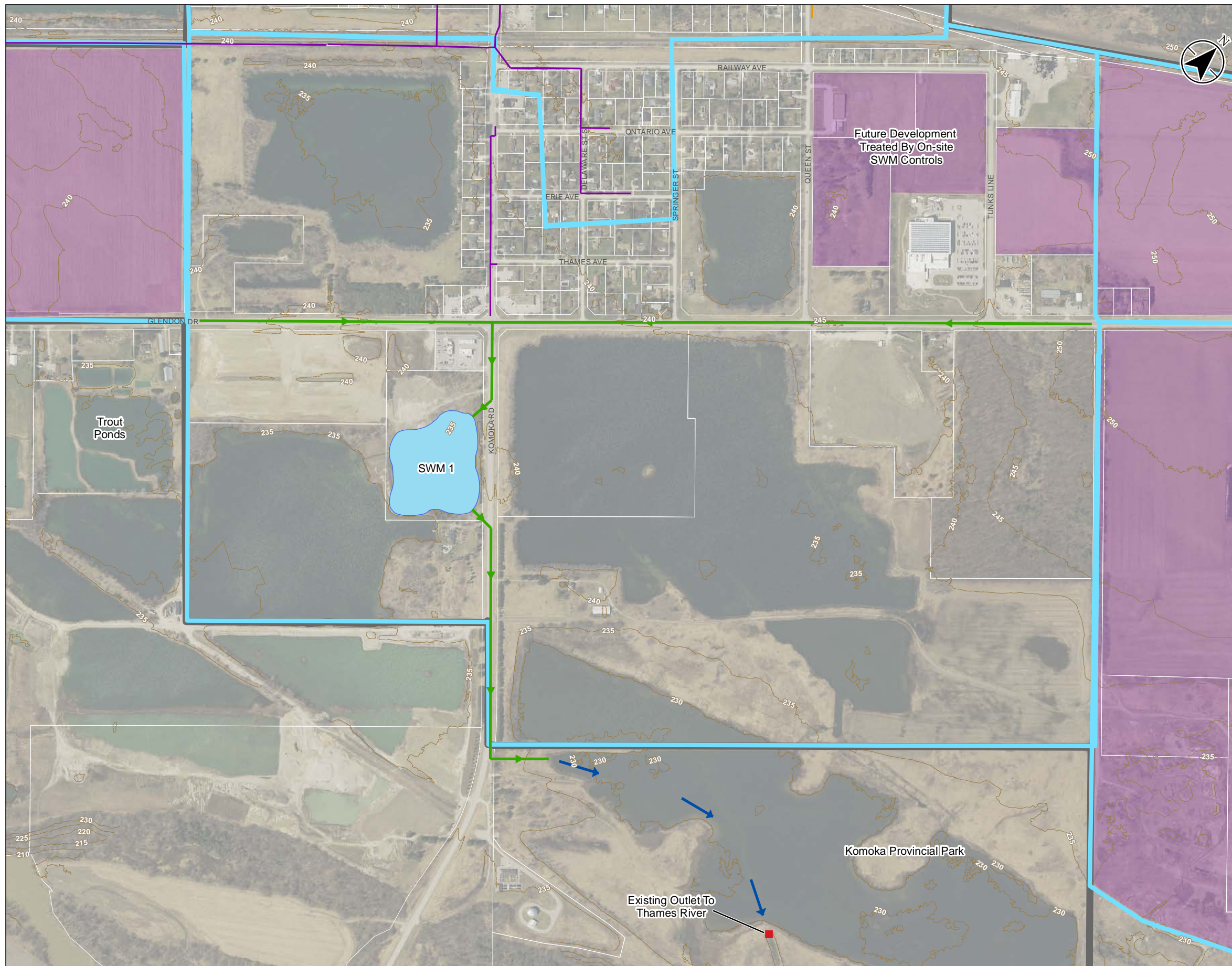
Figure No.
 B4-4

Title:
 South Ilderton Development Area
 Preferred Alternative
 Two SWM Facilities



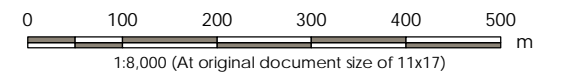
\\CA\0217\FPP\01\work_group\0165630134\preliminary\analysis\sga.mxd | Preferred\165630134_OPT_B4-4_IldertonSouthDA.mxd | Revised: 2020-03-10 By: albrown

\\CA\0217\FPP\SS01\work_group\016563\active\165630134\preliminary\analysis\kga.mxd\Preferred\165630134_OPT_B4-5_KomokaDrain1.mxd Revised: 2020-03-10 By: albrown

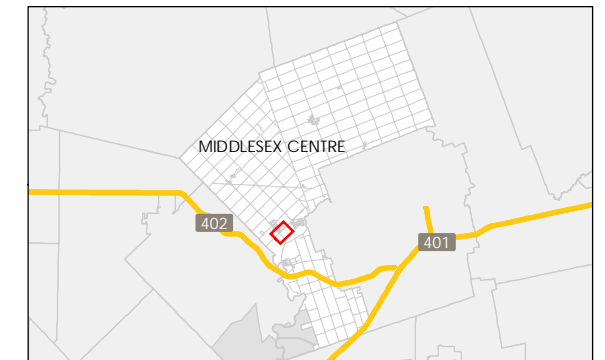


Legend

- Elevation Contour
- Development Area
- Storm Catchment Area
- Settlement Boundary
- Existing Infrastructure:**
- Outlet
- Storm Sewer
- Municipal Drain
- Proposed Infrastructure:**
- Overland Flow Direction
- Storm Sewer
- SWM Facility



- Notes**
1. Coordinate System: NAD 1983 UTM Zone 17N
 2. Parcels © Teranet Enterprises Inc. and its suppliers. All rights reserved. Not a plan of survey.
 3. 2015 orthoimagery © 2018 of the Queen's Printer for Ontario. All rights reserved.



Project Location: Municipality of Middlesex Centre
 165630134 REVA
 Prepared by ASB on 2020-03-10

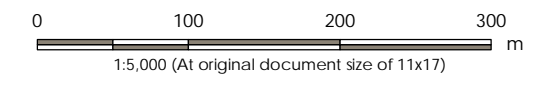
Client/Project: MUNICIPALITY OF MIDDLESEX CENTRE
 STORM DRAINAGE MASTER PLAN MUNICIPAL CLASS ENVIRONMENTAL ASSESSMENT

Figure No.: B4-5

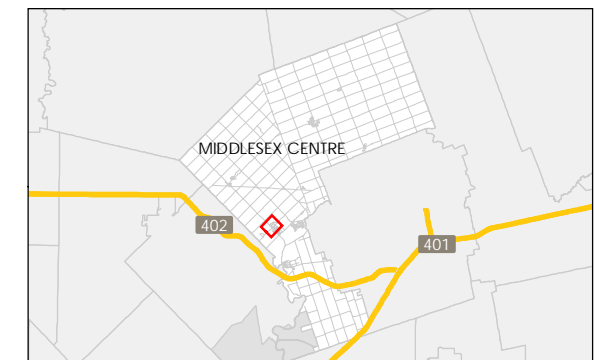
Title: Komoka Drain No. 1 Preferred Alternative
Combined Alternatives 3 and 5

Legend

- Elevation Contour
- Development Area
- Storm Catchment Area
- Settlement Boundary
- Existing Infrastructure:**
- Storm Sewer
- Perforated Subdrain
- Municipal Drain
- Proposed Infrastructure:**
- Overland Flow Direction
- Storm Sewer
- SWM Facility



- Notes
1. Coordinate System: NAD 1983 UTM Zone 17N
 2. Parcels © Teranet Enterprises Inc. and its suppliers. All rights reserved. Not a plan of survey
 3. 2015 orthoimagery © 2018 of the Queen's Printer for Ontario. All rights reserved.

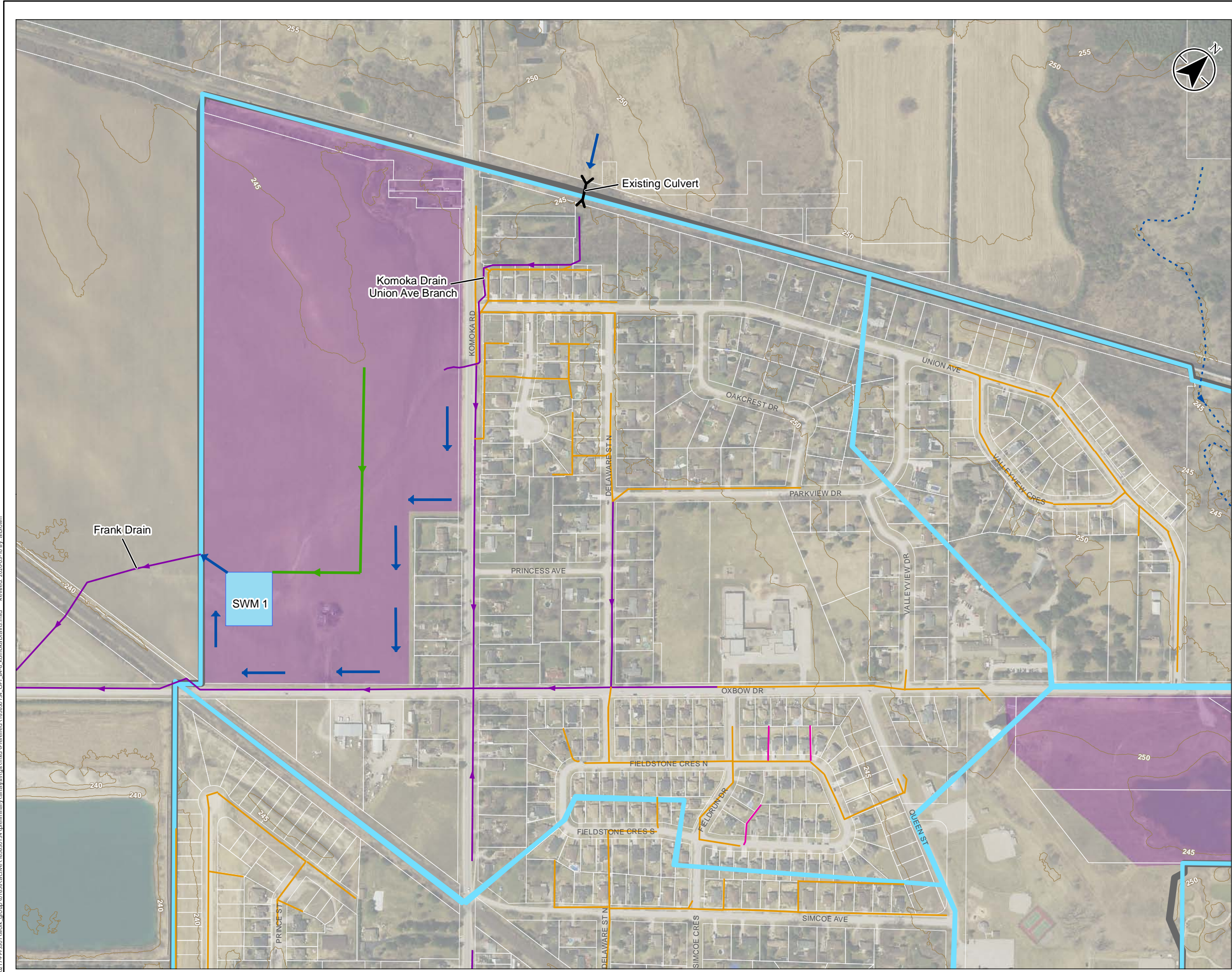


Project Location: Municipality of Middlesex Centre
 165630134 REVA
 Prepared by ASB on 2020-03-10

Client/Project: MUNICIPALITY OF MIDDLESEX CENTRE
 STORM DRAINAGE MASTER PLAN MUNICIPAL CLASS ENVIRONMENTAL ASSESSMENT

Figure No.: B4-6

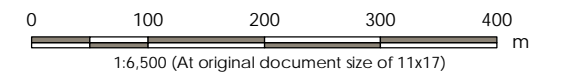
Title: Komoka Drain No. 3 Preferred Alternative Service Only Proposed Development



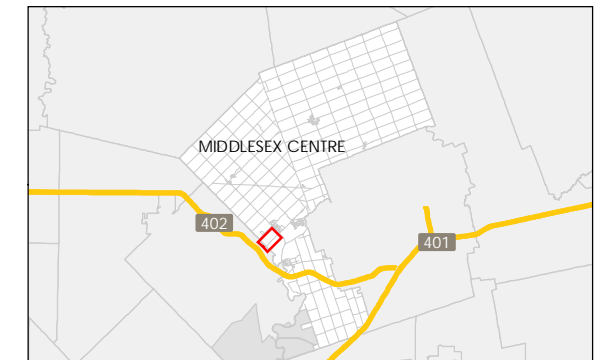
\\CA\0217\PP\SS01\work_group\0165630134\preliminary\analysis\ga.mxd Preferred\165630134_OPT_B4-6_KomokaDrain3.mxd Revised: 2020-03-10 By: albrown

Legend

- Elevation Contour
- Development Area
- Storm Catchment Area
- Settlement Boundary
- Existing Infrastructure:**
- Outlet
- Municipal Drain
- Creek
- Proposed Infrastructure:**
- Overland Flow Direction
- Storm Sewer
- Glendon Drive Ditch
- SWM Facility



- Notes
1. Coordinate System: NAD 1983 UTM Zone 17N
 2. Parcels © Teranet Enterprises Inc. and its suppliers. All rights reserved. Not a plan of survey.
 3. 2015 orthoimagery © 2018 of the Queen's Printer for Ontario. All rights reserved.

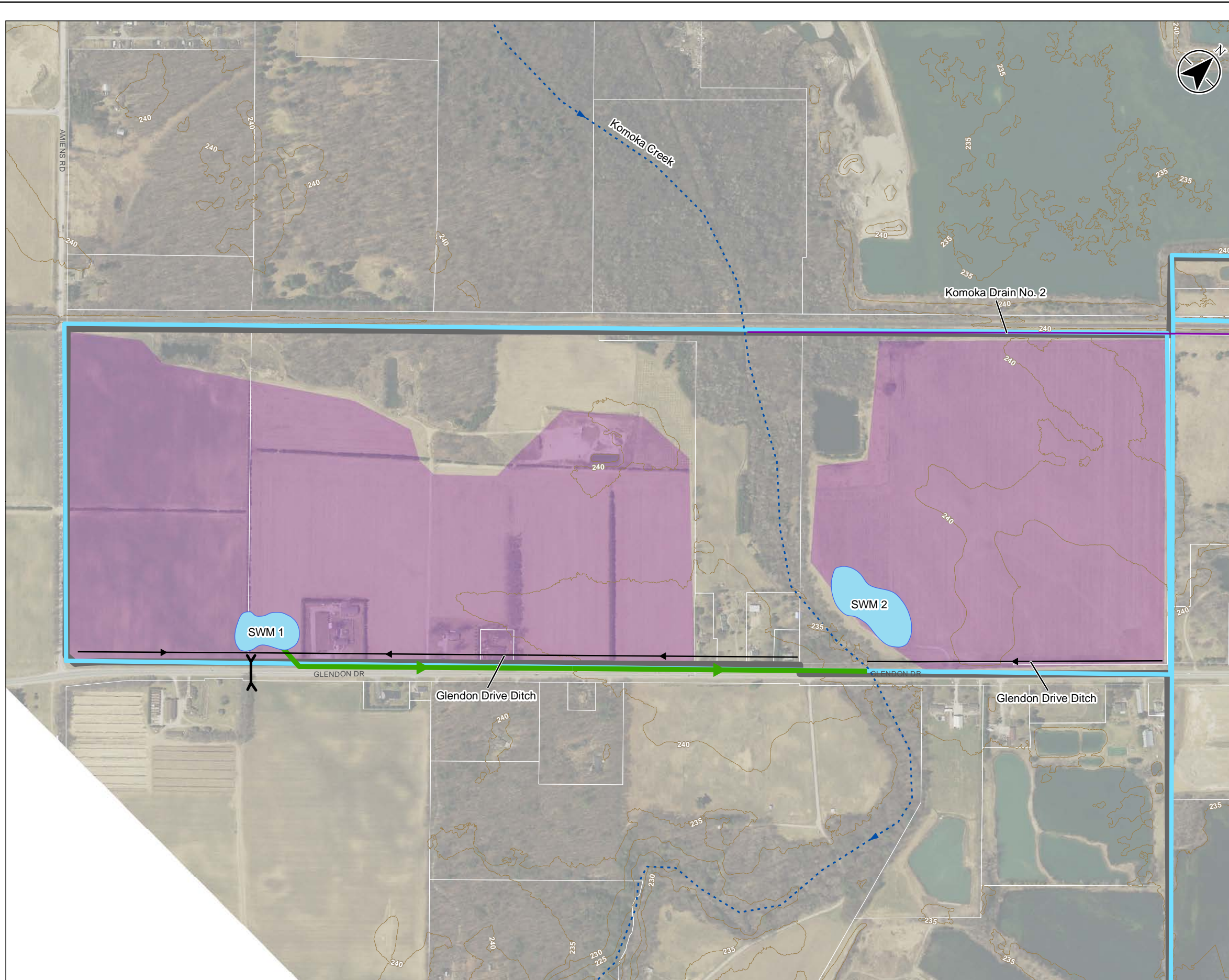


Project Location: Municipality of Middlesex Centre
 165630134 REVA
 Prepared by ASB on 2020-03-10

Client/Project: MUNICIPALITY OF MIDDLESEX CENTRE
 STORM DRAINAGE MASTER PLAN MUNICIPAL CLASS ENVIRONMENTAL ASSESSMENT

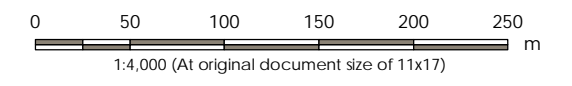
Figure No.: B4-7

Title: West Komoka Development Area Preferred Alternative Service Only Proposed Development

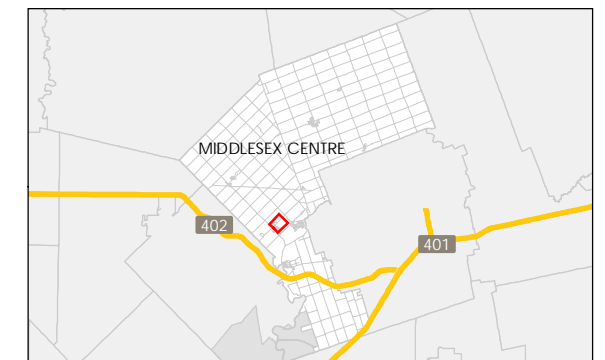


Legend

- Elevation Contour
- Development Area
- Storm Catchment Area
- Settlement Boundary
- Existing Infrastructure:**
- Outlet
- Storm Sewer
- Creek
- Proposed Infrastructure:**
- Overland Flow Direction
- Storm Sewer
- Drainage Divide
- SWM Facility



Notes
 1. Coordinate System: NAD 1983 UTM Zone 17N
 2. Parcels © Teranet Enterprises Inc. and its suppliers. All rights reserved. Not a plan of survey.
 3. 2015 orthoimagery © 2018 of the Queen's Printer for Ontario. All rights reserved.

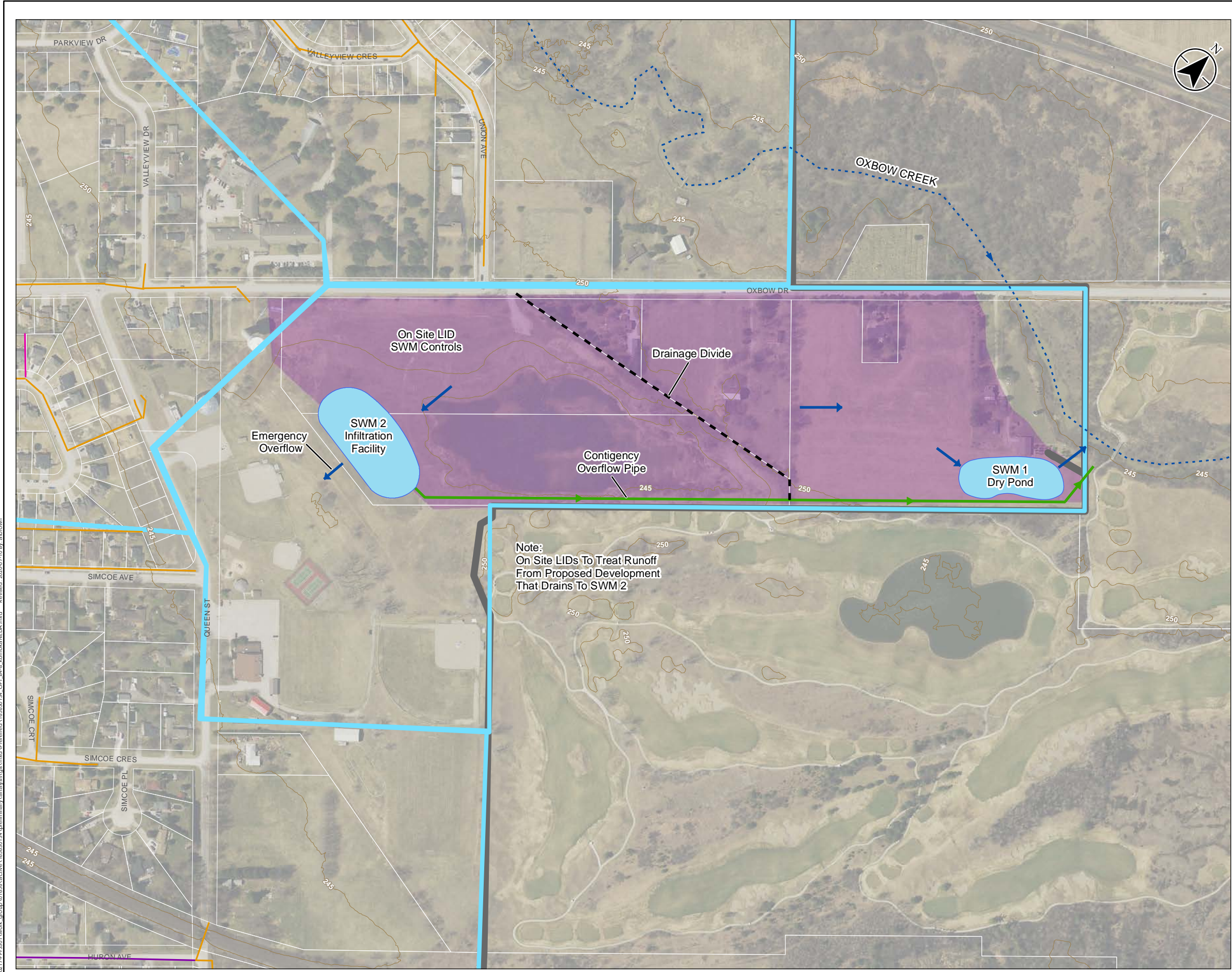


Project Location: Municipality of Middlesex Centre
 165630134 REVA
 Prepared by ASB on 2020-07-10

Client/Project:
 MUNICIPALITY OF MIDDLESEX CENTRE
 STORM DRAINAGE MASTER PLAN MUNICIPAL CLASS ENVIRONMENTAL ASSESSMENT

Figure No.
 B4-8

Title
 North East Komoka Development Area Preferred Alternative Two SWM Facilities



Note:
 On Site LIDs To Treat Runoff From Proposed Development That Drains To SWM 2

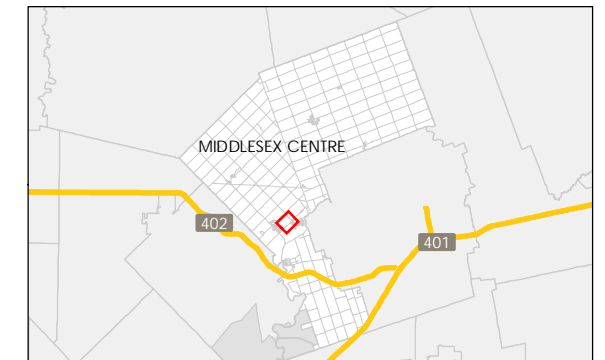
\\CA\217\FPP\SS01\work_group\0165630134\preliminary\analysis\sga.mxd | Preferred\165630134_OPT_B4-8_KomokaNEDA.mxd | Revised: 2020-07-10 By: albrown

Legend

- Elevation Contour
- Development Area
- Storm Catchment Area
- Settlement Boundary
- Existing Infrastructure:**
- Outlet
- Storm Sewer
- Municipal Drain
- Proposed Infrastructure:**
- Overland Flow Direction
- Storm Sewer
- Existing Swale
- Drainage Divide
- SWM Facility



- Notes
1. Coordinate System: NAD 1983 UTM Zone 17N
 2. Parcels © Teranet Enterprises Inc. and its suppliers. All rights reserved. Not a plan of survey.
 3. 2015 orthoimagery © 2018 of the Queen's Printer for Ontario. All rights reserved.

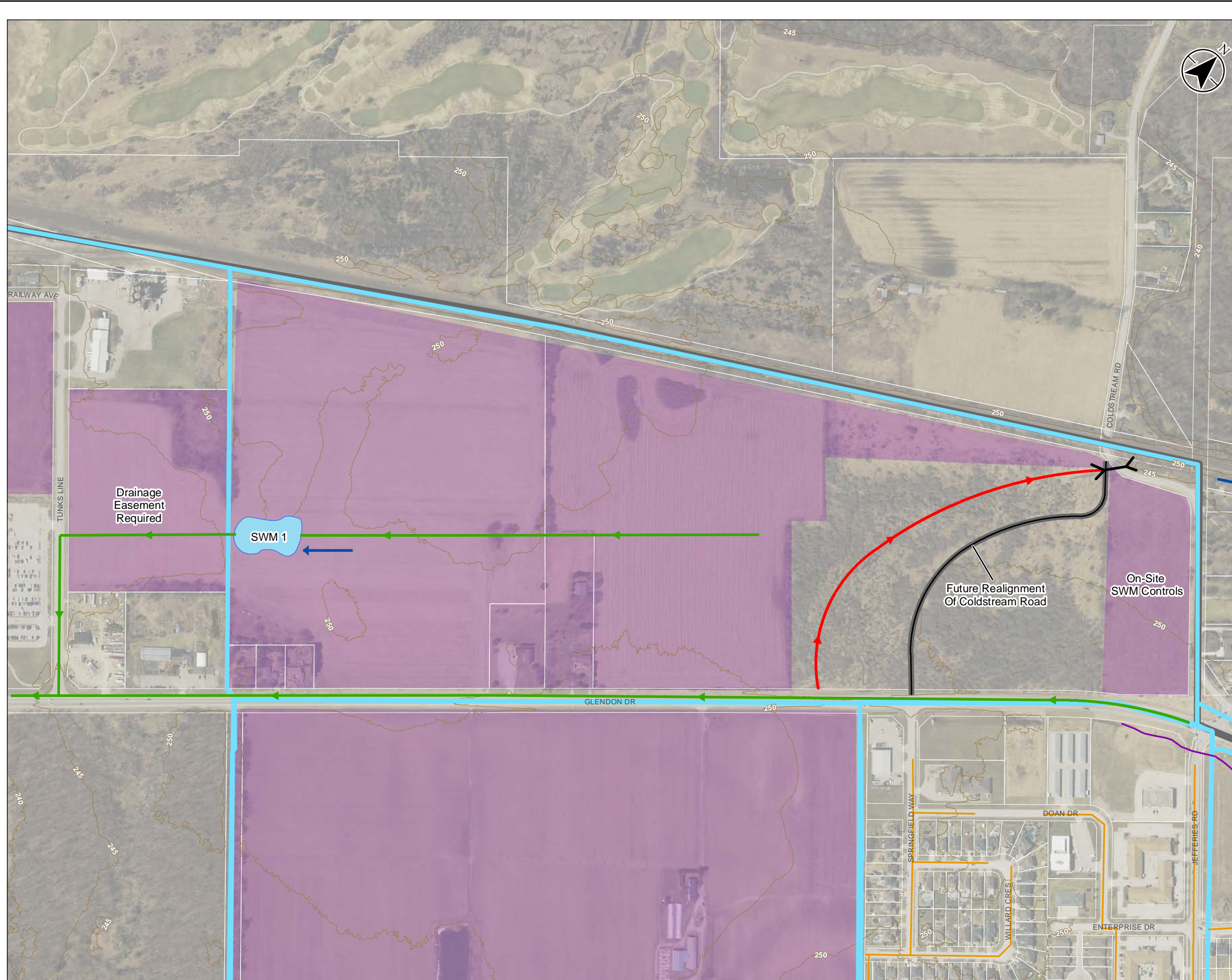


Project Location: Municipality of Middlesex Centre
 165630134 REVA
 Prepared by ASB on 2020-03-10

Client/Project: MUNICIPALITY OF MIDDLESEX CENTRE
 STORM DRAINAGE MASTER PLAN MUNICIPAL CLASS ENVIRONMENTAL ASSESSMENT

Figure No. B4-9

Title: Kilworth Glendon Drive Area Preferred Alternative Discharge to Glendon Drive Trunk Sewer



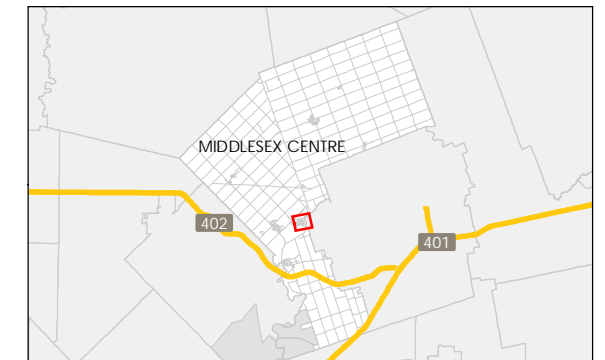
\\CA\0217\FPP\01\work_group\0165630134\preliminary\analysis\sga.mxd Preferred\165630134_OPT_B4-9_KilworthGlendonDr.mxd Revised: 2020-03-10 By: albrown

Legend

- Elevation Contour
- Storm Catchment Area
- Settlement Boundary
- Existing Infrastructure:**
- Outlet
- Storm Sewer
- Proposed Infrastructure:**
- Overland Flow Direction
- Ditch Improvements
- Enhanced Grassed Swale



- Notes
1. Coordinate System: NAD 1983 UTM Zone 17N
 2. Parcels © Teranet Enterprises Inc. and its suppliers. All rights reserved. Not a plan of survey
 3. 2015 orthoimagery © 2018 of the Queen's Printer for Ontario. All rights reserved.

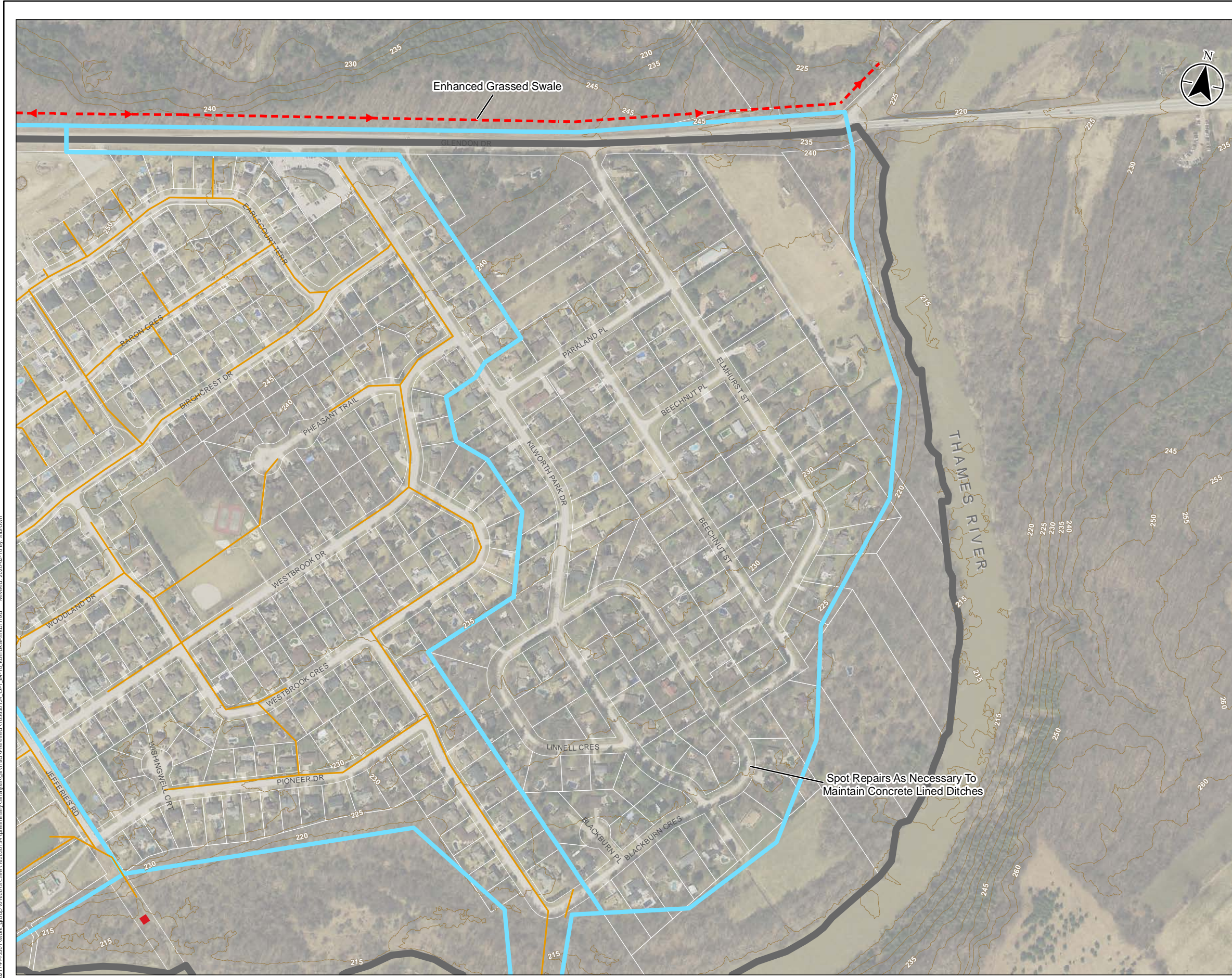


Project Location: Municipality of Middlesex Centre
 165630134 REVA
 Prepared by ASB on 2020-03-10

Client/Project:
 MUNICIPALITY OF MIDDLESEX CENTRE
 STORM DRAINAGE MASTER PLAN MUNICIPAL CLASS ENVIRONMENTAL ASSESSMENT

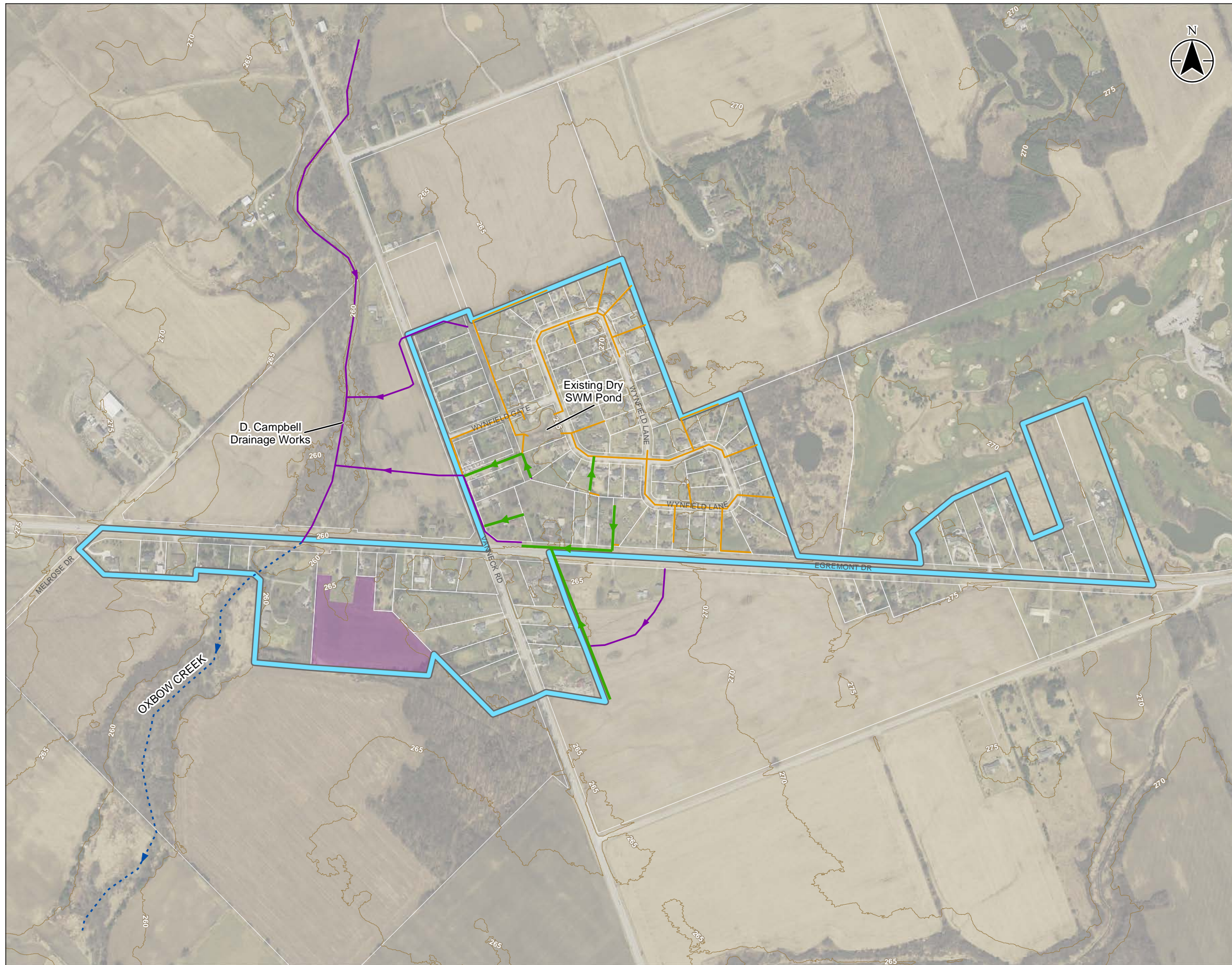
Figure No.
 B4-10

Title:
 Kilworth East
 Preferred Alternatives
 SWM Strategy per Glendon Drive EA



\\CA\0217\FPP\01\work_group\0165630134\preliminary\analysis\sga.mxd | Preferred\165630134_OPT1_B4-10_KilworthEast.mxd
 Revised: 2020-03-10 By: albrown

\\CA\0217\FPPSS01\work_group\0165630134\preliminary\analysis\B4.mxd Preferred\165630134_DPT_B4-11_Melrose.mxd Revised: 2020-03-10 By: albrown



Legend

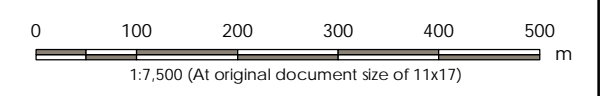
- Elevation Contour
- Development Area
- Storm Catchment Area
- Settlement Boundary

Existing Infrastructure:

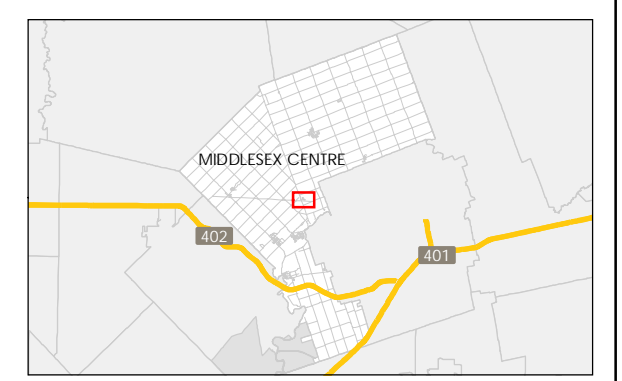
- Outlet
- Storm Sewer
- Municipal Drain
- Creek

Proposed Infrastructure:

- Storm Sewer



- Notes
1. Coordinate System: NAD 1983 UTM Zone 17N
 2. Parcels © Teranet Enterprises Inc. and its suppliers. All rights reserved. Not a plan of survey.
 3. 2015 orthoimagery © 2018 of the Queen's Printer for Ontario. All rights reserved.



Project Location: Municipality of Middlesex Centre
165630134 REVA
Prepared by ASB on 2020-03-10

Client/Project: MUNICIPALITY OF MIDDLESEX CENTRE
STORM DRAINAGE MASTER PLAN MUNICIPAL CLASS ENVIRONMENTAL ASSESSMENT

Figure No.: B4-11

Title: Melrose
Preferred Alternative
Relocate Drainage System